

Angle Seat Valve(Piston Valve) Series PV600 (Gunmetal Body)

2/2-way Angle-Seat Valve Pneumatically Operated, for medium up to +180° C, Gunmetal Body female thread, port connection DN 15 - 65

- High flow rate;
- Long life cycle;
- NC and NO universal actuators with modular universal accessory program up to control heads;
- Deliverable with flow direction below or above seat
- Simple conversion of the circuit function.

◆ How to Order



PV600P032NCS



PV600P040NCS

◆

PV600 P 015 NC S x 63mm

Acting type	
S	Single acting
D	Double acting

Type of actuation	
NO	Normally Open
NC	Normally Closed (standard)

Nominal diameter			
20	G3/4	15	G1/2
32	G1 1/4	25	G1
50	G2	65	G2 1/2

Actuator Material code	
P	PA Actuator

Model	
PV600	600 series Angle Seat Valve

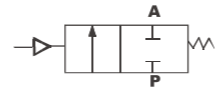
◆ Actuator Size

Port Size	Standard Actuator Size mm
	PA
DN15	40,50
DN20	50,63,80
DN25	50,63,80
DN32	63,80
DN40	63,80
DN50	63,80
DN65	80,100

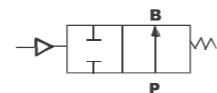
◆ PV600 Series Plunger Pilot angle seat valve is propelled by a piston actuator, either single acting or double acting. 2/2 Way gunmetal valve body with big flow capacity V type seals ensure reliable and effective sealing Maintenance free, compatible with various accessories, Direction indicating, stroke limiting or manual switching can be achieved conveniently. Easy to install and maintain;

◆ The specific gunmetal material fuses zinc as a key element, which makes our valves applicable in high air tightness industry and highly resistant to corrosion in air, sea water, fresh water and steam.

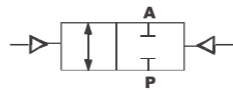
Symbol **Control function A**
(closed by spring force in rest position)



Control function B
(open in rest position)



Control function I
(double-acting actuator)

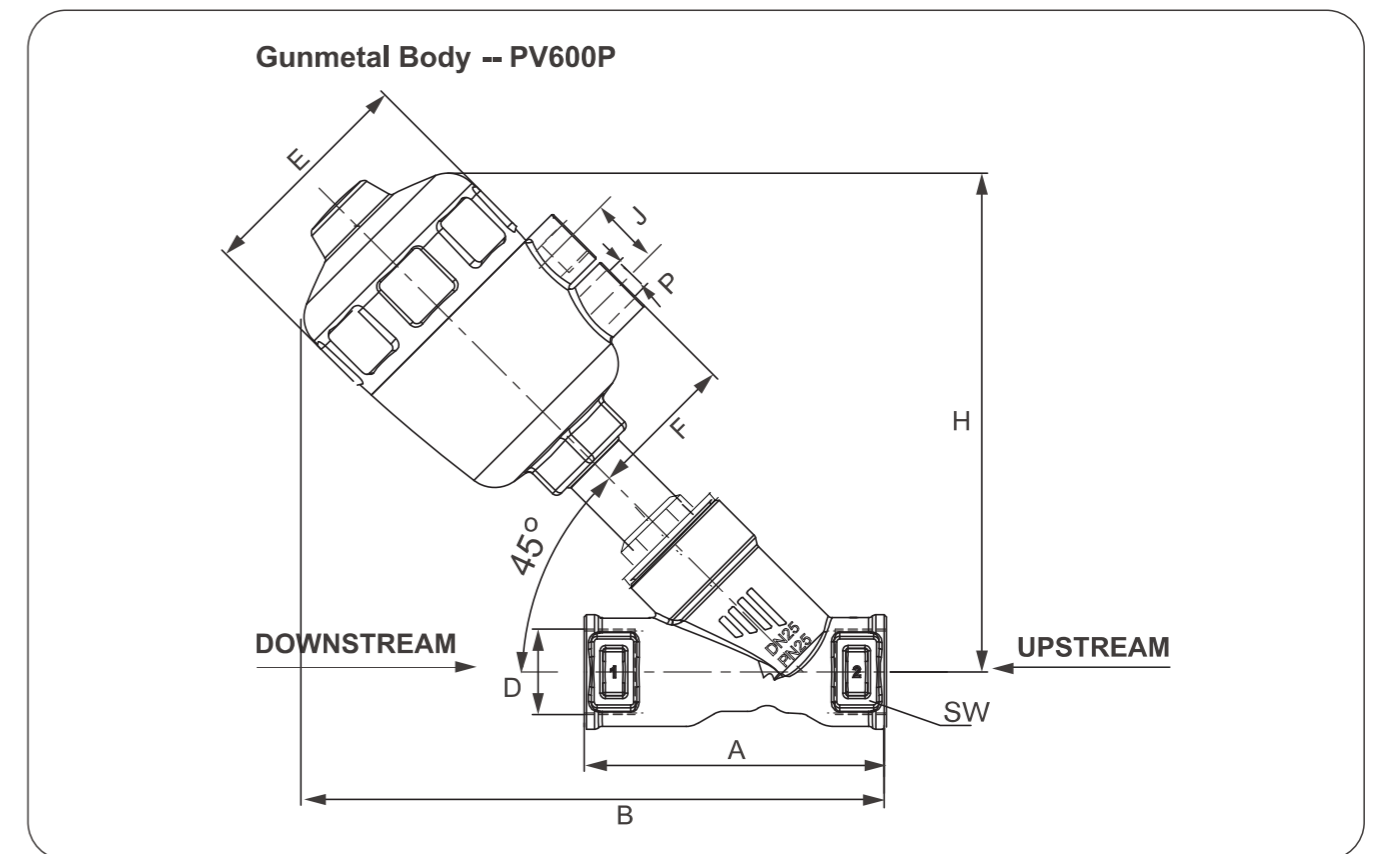


Angle Seat Valve(Piston Valve) Series PV600 (Gunmetal Body)

◆ Specifications

Model Specification	Normally Closed	P015NC	P020NC	P025NC	P032NC	P040NC	P050NC	P065NC
	Normally Open	P015NO	P020NO	P025NO	P032NO	P040NO	P050NO	P065NO
Material of body / Actuator	Gunmetal Body/PA							
Operating Method	Plunger Pilot							
Ambient and fluid	Air,Water,Oil,Steam (50CTS Bellow)							
Port size	G1/2	G3/4	G1	G1 1/4	G1 1/2	G2	G2 1/2	
Nominal Diameter mm	13	20	25	32	40	50	65	
Kv (m ³ /h)	4.2	8	19	27.5	42	55	90	
Seat seal	PTFE/FPM							
Stem seal	PTFE/FPM							
Piston Seal	PTFE/FPM/NBR							

◆ Dimensions [mm]



Port Size	DN (mm)	Actuator (mm)	A	B	D	E	F	H	P	J	SW
1/2"	DN15	40	88	139	G1/2	30	53	115	G1/8	20	27
		50	88	163	G1/2	44	64	140	G1/4	24	27
3/4"	DN20	50	96	171	G3/4	44	64	144	G1/4	24	34
1"	DN25	50	108	181	G1	44	64	152	G1/4	24	41
		63	108	206	G1	54	80	177	G1/4	24	41
1-1/4"	DN32	63	112	219	G1-1/4	54	80	183	G1/4	24	50
1-1/2"	DN40	63	133	222	G1-1/2	54	80	188	G1/4	24	55
2"	DN50	63	154	249	G2	54	80	204	G1/4	24	70
		80	154	270	G2	62	101	225	G1/4	24	70
2-1/2"	DN65	80	191	275	G2-1/2	62	101	239	G1/4	24	85