

Angle Seat Valve(Piston Valve)

Series PV700 (Y-type compact Valve)

2/2-way Angle-Seat Valve Pneumatically Operated, for medium up to +180° C, Polished Actuator port connection DN 15 - 65

- High flow rate;
- Long life cycle;
- NC and NO universal actuators with modular universal accessory program up to control heads;
- Deliverable with flow direction below or above seat
- Simple conversion of the circuit function.

◆ How to Order

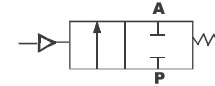


PV700S025NCS

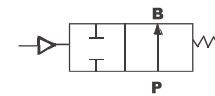
PV700 S 015 NC S x 63mm

Symbol

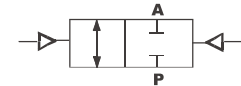
Control function A
(closed by spring force
in rest position)



Control function B
(open in rest position)



Control function I
(double-acting actuator)



Acting type

S	Single acting	D	Double acting
---	---------------	---	---------------

Body Material

Blank	S.S 304	(standard)
4	S.S 316	
5	S.S 316L	

Type of actuation

NO	Normally Open
NC	Normally Closed (standard)

Port code

20	G3/4	15	G1/2
32	G1 1/4	40	G1 1/2
50	G2	65	G2 1/2

Actuator Material code

S	S.S. Actuator
---	---------------

Model

PV700	700 seires Angle Seat Valve
-------	-----------------------------

◆ Actuator Size

Port Size	Standard Actuator Size mm
	S.S.
DN10	40,50
DN15	40,50
DN20	50,63,80
DN25	50,63,90
DN32	63,80
DN40	63,80
DN50	63,80
DN65	80,100

- ◆ PV700 Series Plunger Pilot angle seat valve is propelled by a piston actuator, either single acting or double acting. The actuator is one punch formed with stainless steel plate, surface polished, thus more appealing, applicable to different working temperature:
2/2 Way stainless steel valve with big flow capacity
V type seals ensure reliable and effective sealing
Maintenance free, compatible with various accessories,
Direction indicating, stroke limiting or manual switching can be achieved conveniently.