

# Angle Seat Valve(Piston Valve)

## Series PV800 (Y-type compact Valve )

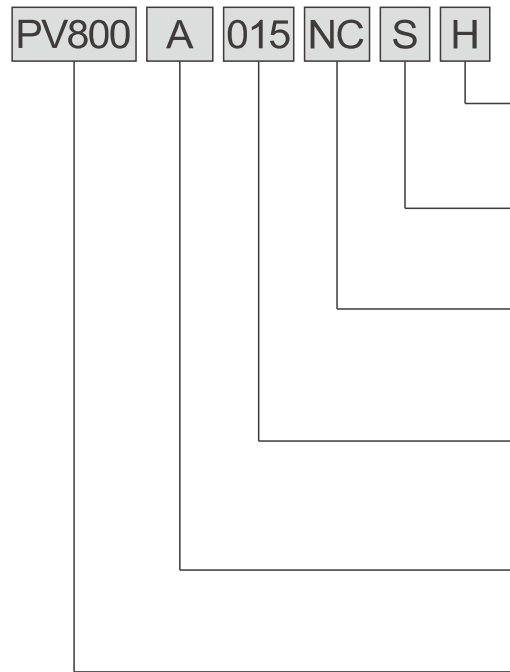
### 2/2-way Angle seat valve Pneumatically Operated,for medium up to +150°C, threaded port connection, DN 15-50

- Classic design, Long life cycle
- NC and NO is optional
- Structure in coaxial stop,leakage proof and high flow rate
- Saving energy.

#### ◆ How to Order

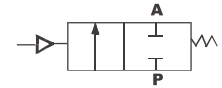


PV800A020NC

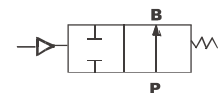


#### Symbol

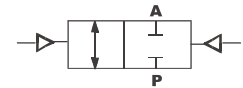
**Control function A**  
(closed by spring force in rest position)



**Control function B**  
(open in rest position)



**Control function I**  
(double-acting actuator)



#### Sealing Require

H	High Temperature
Blank	Normal (standard)

#### Acting type

S	Single acting
D	Double acting (standard)

#### Control Function

NO	Normally open
NC	Normally closed (standard)
NA	Liberty state

#### Port Code

15	G1/2	20	G3/4
25	G1	32	G1 1/4
40	G1 1/2	50	G2

#### Actuator & stem Material code

S	S.S.
A	Aluminium

#### Model

PV800	800 series anglse seat Valve
-------	------------------------------

#### Construction

Seal Material: PTFE (NBR, FKM and EPDM on request)  
Liquid and gaseous media that do not attack the housing and seal materials

#### Media

Control Medium Air

#### Temperature range

Medium temperature: -10 to 80°C with NBR seal -10 to 150°C (PTFE,FKM)

Ambient temperature: -10 to 60°C

Standard Version: Aluminium actuator,S.S actuator on require

#### Applications

Food, packaging, petrochemical, metallurgican, spraying, vehicles, printing and dyeing machinery etc.;