

Economical Style Angle Seat Valve(Piston Valve)

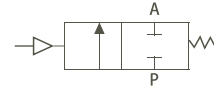
Series PV32S(Filling Valve)

2/2-way Angle-Seat Valve(Filling Valve)
Pneumatically Operated, for
medium up to +180° C,
Stainless Steel Actuator Dia 32mm
Thread port DN 10-20

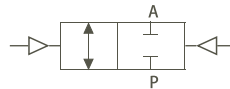
- Compact style 2/2-way stainless steel valve;
- Movable seat & V type seals ensure reliable and effective performance
- Single acting NC, single acting NO and double acting optional

Symbol

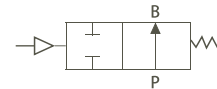
Control function A
 (closed by spring force in rest position)



Control function I
 (double-acting actuator)



Control function B
 (open in rest position)



◆ How to Order



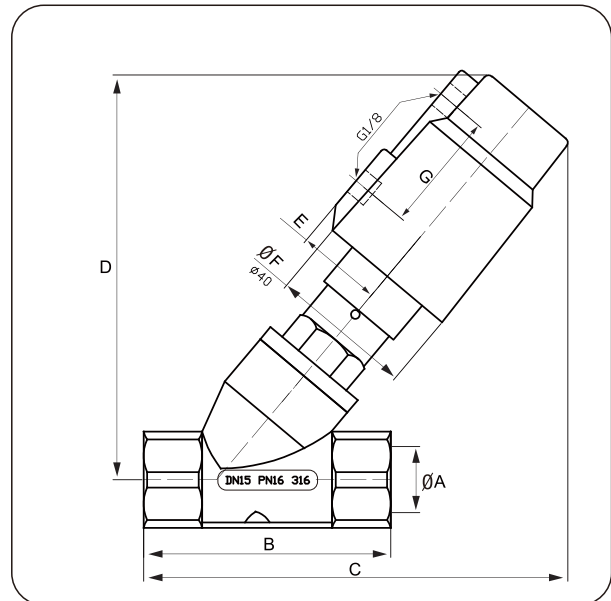
PV32S015

32 mm Actuator							
Order Code	ØA	B	C	D	E	ØF	G
PV32S010	3/8	54.5	93	110	24	40	34
PV32S015	1/2	68.5	119	113.5	24	40	34
PV32S020	3/4	77	129	130.5	24	40	34

◆ **Series PV32S consists of 2-way direct acting pneumatic filling valve available in normally closed or normally open construction. Built for specific applications, these valves come in a straight-through body design made of stainless steel.**

- High flow due to angled seat design
- Anti-waterhammer design(fluid entry under the disc)
- Actuator rotatable through 360°
- Reliable performance, maintenance-free stuffing box

◆ Dimensions [mm]



◆ Specifications

Medium temperature: -10°C to 180°C
Pilot fluid temperature range: -10°C to 60°C
Working pressure: 3 bar
Maximum pilot pressure: 6 bar
Pilot fluid: Filtered air
Valve body material: SS304/316/316L
Stuffing box housing material: SS304/316/316L
Stem/Disc material: SS304
Stuffing box packing: PTFE chevrons
Wiper seal: FPM
Disc seal: PTFE
Valve body seal: PTFE