

# Pneumatically Operated Angle Seat Valve

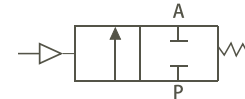
## Series PV32P(ASCO type)

**FESCOLO**

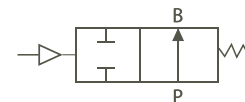
**2/2-way Angle Body Multi-Purpose Valves**  
**Pneumatically Operated, for**  
**medium up to +120° C,**  
**32mm PA actuator**  
**Thread port DN 10-20**

**Control function A**  
 (closed by spring force  
 in rest position)

**Symbol**



**Control function B**  
 (open in rest position)

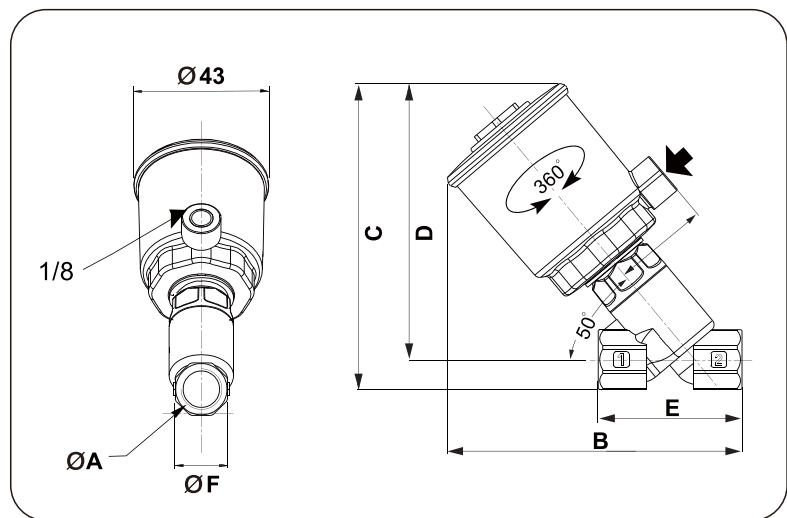


◆ **How to Order**



PV32P015NC

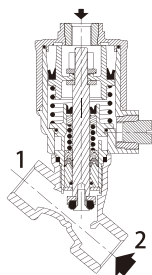
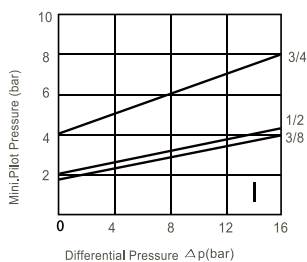
◆ **Dimensions [mm]**



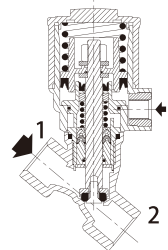
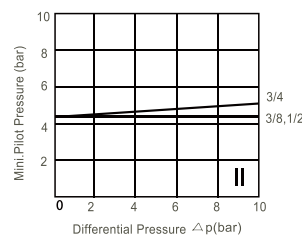
32 mm Actuator						
Order Code	ØA	B	C	D	E	ØF
PV32P010	3/8	92	93	81.5	68	28
PV32P015	1/2	99	97	83.5	68	28
PV32P020	3/4	107	104	88	75	32

**32 mm Actuator Graphs for Steam and Fluids**

**Normally Open Valve - Entry under Disc**



**Normally Closed Valve - Entry above Disc**



◆ **Series PV32P consists of 2-way direct acting valve available in normally closed or normally open construction. Built for specific applications, these valves come in a straight-through body design made of stainless steel.**

- High flow due to angle seat design
- Anti-waterhammer design (fluid entry under the disc)
- Vacuum operation up to 10<sup>-3</sup>mbar
- Actuator rotatable through 360°
- Reliable performance, maintenance-free stuffing box

**Specifications**

- Ambient temperature range:** -10°C to 60°C
- Pilot fluid temperature range:** -10°C to 60°C
- Maximum allowable pressure:** 16 bar
- Maximum viscosity:** 600 cSt (mm<sup>2</sup>/s)<sup>1)</sup>
- Maximum pilot pressure:** 10 bar
- Pilot fluid:** Filtered air or water
- Valve body material:** SS304/316/316L
- Stuffing box housing material:** SS304/316/316L
- Stem/Disc material:** SS304
- Stuffing box packing:** PTFE chevrons
- Wiper seal:** FPM
- Disc seal:** PTFE
- Valve body seal:** PTFE

<sup>1)</sup> For higher viscosity applications, please consult AXM.