

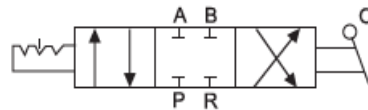
## K34R6 Series Hand-Switching Valve:



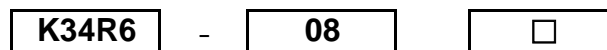
K34R6-08



K34R6-08D



### 1. Ordering Code :



**Valve type**

K34R6: 3positions/4ways hand-switching valve

**Port size**

06: G1/8

08: G1/4

**Connecting port position**

Blank: Two ports on back and front side (four ports in total)

D: Four ports at the bottom

S: One port on each side (four ports in total)

### 2.Characteristics:

- 1) The K34R6 series hand valve is controlled by human or machine, to switch the direction of air flow.
- 2) The material of valve body: Aluminum alloy.
- 3) There are three connecting types for K34R6, bottom, back and front side, and each side.
- 4) Different thread types can be offered according to customers' requirements, e.g.: PT, NPT etc.

**3.Specification:**

Item	K34R6-06	K34R6-08	K34R6-08D
Valve type	Three positions four ports		
Applicable medium	40 Micron Filtered Compressed air		
Effective sectional area	10mm <sup>2</sup>		
Working pressure	0~0.8 MPa		
Temperature range	-5°C~50°C		
Port size	G1/8	G1/4	G1/4

**4. Overall and Dimension Sheet:**

