

## QE Series Quick Exhaust Valve:

### 1. Ordering Code :

**QE** - **02**

**Valve type**

QE: QE series quick exhaust valve

**Port size**

01: G1/8

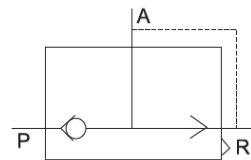
02: G1/4

03: G3/8

04: G1/2



QE-02



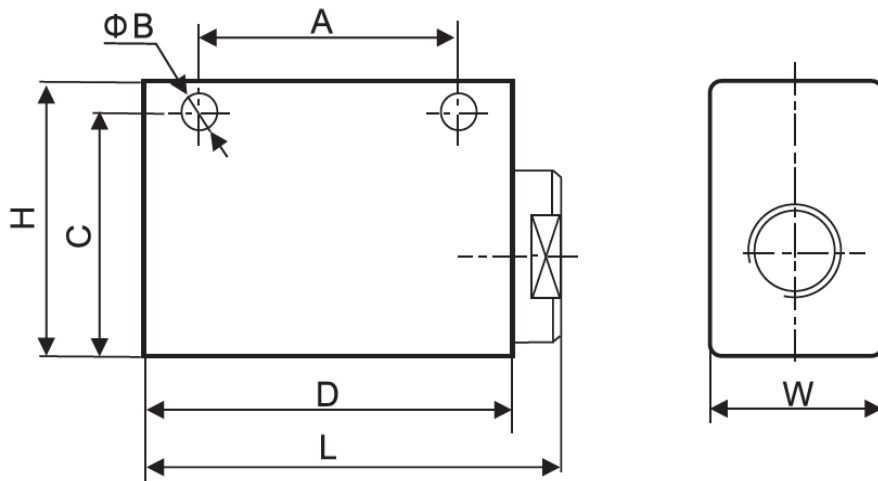
### 2.Characteristics:

- 1) The QE series quick exhaust valve is generally installed on the pipeline between the cylinder and reversal valve and near cylinder, which directly discharge the air from cylinder without passing the reversal valve and thus to achieve the goal of fast reversion of cylinder
- 2) The effect on improving cylinder speed is especially obvious.
- 3) Different thread types can be offered according to customers' requirements, e.g.: PT, NPT etc.

### 3.Specification:

Item	QE-01	QE-02	QE-03	QE-04	QE-06
Applicable medium	Filtered compressed air				
Working pressure	0~0.95 MPa				
Temperature range	0°C~60°C				
Port size	G1/8	G1/4	G3/8	G1/2	G3/4
Effective sectional area	16mm <sup>2</sup>	27.5mm <sup>2</sup>	38mm <sup>2</sup>	71mm <sup>2</sup>	72.5mm <sup>2</sup>

**4. Overall and Dimension Sheet:**



Model	Bore	L	W	H	A	B	C	D
QE-01	G1/8	46	20	32	30	4.3	27	40
QE-02	G1/4	62	25	40	39	5.6	33.5	55
QE-03	G3/8	62	25	40	39	5.6	33.5	55
QE-04	G1/2	98	38	64	60	8.5	51	90
QE-06	G3/4	98	38	64	60	8.5	51	90