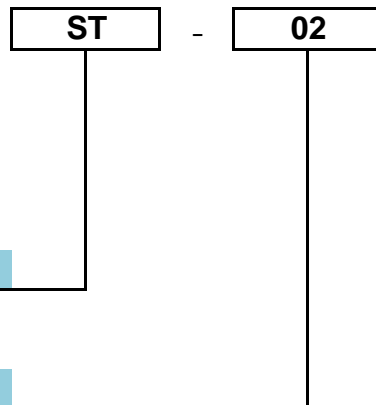


ST Series Shuttle Valve:

1. Ordering Code :



Valve type

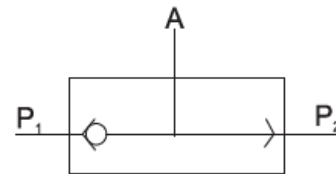
ST: ST series shuttle valve

Port size

- 01: G1/8
- 02: G1/4
- 03: G3/8
- 04: G1/2
- 06: G3/4
- 08: G1



ST-02



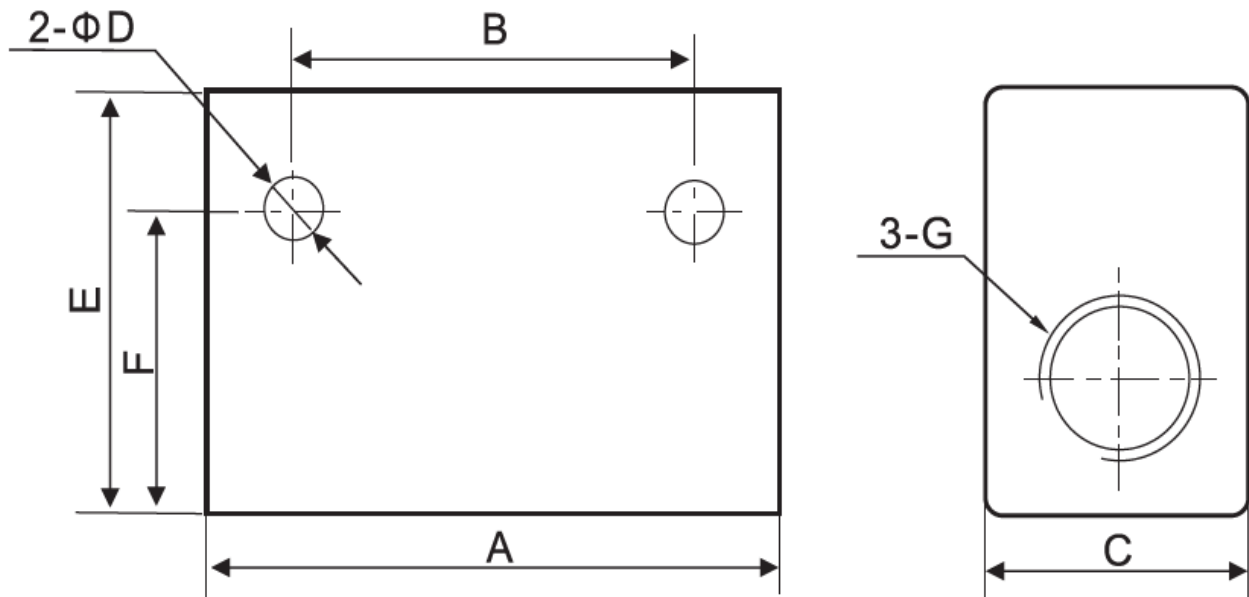
2.Characteristics:

- 1) The ST series shuttle valve is a type of valve which allows fluid to flow through it from one of two sources.
- 2) Generally this kind of shuttle valve is used in pneumatic systems
- 3) Different thread types can be offered according to customers' requirements, e.g.: PT, NPT etc.

3.Specification:

Item	ST-01	ST-02	ST-03	ST-04	ST-06	ST-08
Applicable medium	Filtered compressed air					
Working pressure	0~1.0 MPa					
Temperature range	-5℃~60℃					
Port size	G1/8	G1/4	G3/8	G1/2	G3/4	G1
Effective sectional area	7.5mm ²	21mm ²	40mm ²	60mm ²	110mm ²	190mm ²

4. Overall and Dimension Sheet:



Model	A	B	C	D	E	F	G
ST-01	40	24	16	4.5	25	20.5	G1/8"
ST-02	50	35	22	5.5	35	25	G1/4"
ST-03	75	48	30	7	50	42	G3/8"
ST-04	75	48	30	7	50	42	G1/2"
ST-06	110	72	40	7	70	58	G3/4"
ST-08	110	72	40	7	70	58	G1"