

# HSV Series Hand Sliding Valve:

## 1.Ordering Code :



**Valve type**

HSV: HSV series hand sliding valve

**Port size**

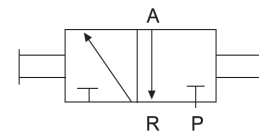
- 01: G1/8
- 02: G1/4
- 03: G3/8
- 04: G1/2
- 06: G3/4

**Thread type**

Blank: Flow direction: from female to male  
 F: Both ends with female thread.



HSV-03



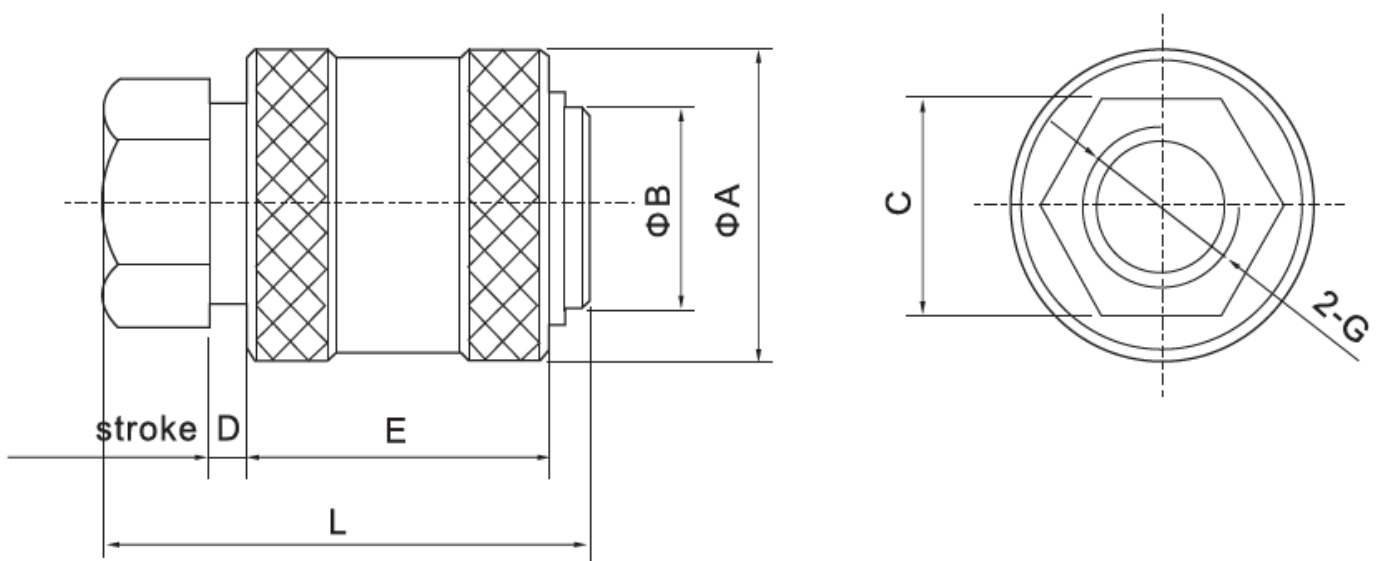
## 2.Characteristics:

- 1) The HSV series hand sliding valve is a two-position three-way valve, which is usually installed in the piping to turn on/off air.
- 2) When it is turned off, the air pressure in the pneumatic system is exhausted simultaneously.
- 3) Different thread types can be offered according to customers' requirements, e.g.: PT, NPT etc.

## 3.Specification:

| Item              | HSV-01                  | HSV-02 | HSV-03 | HSV-04 | HSV-06 |
|-------------------|-------------------------|--------|--------|--------|--------|
| Applicable medium | Filtered compressed air |        |        |        |        |
| Working pressure  | 0~1.0 MPa               |        |        |        |        |
| Temperature range | 5°C~60°C                |        |        |        |        |
| Port size         | G1/8                    | G1/4   | G3/8   | G1/2   | G3/4   |
| Orifice (mm)      | 4                       | 7      | 10     | 12     | 18     |
| Working force     | 20N                     |        |        |        | 30N    |

## 4. Overall and Dimension Sheet:



| Model  | A  | B  | C  | D  | E  | L  | G    |
|--------|----|----|----|----|----|----|------|
| HSV-01 | 20 | 13 | 14 | 3  | 20 | 32 | G1/8 |
| HSV-02 | 27 | 18 | 19 | 5  | 32 | 48 | G1/4 |
| HSV-03 | 30 | 21 | 22 | 5  | 32 | 48 | G3/8 |
| HSV-04 | 38 | 24 | 27 | 10 | 40 | 70 | G1/2 |
| HSV-06 | 45 | 32 | 34 | 10 | 45 | 75 | G3/4 |