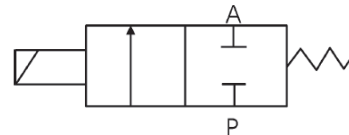


## 2V025 Series 2positions/2ways Solenoid Valve:



### 1.Ordering Code :

**2V**      **025**      -      **08**      -      **DC24V**

#### Solenoid Valve Type

2V: Two positions Two ways solenoid valve

#### Body size

025: Normal size

#### Connecting port size

06: G1/8

08: G1/4

#### Voltage

DC5V      AC24V 50/60Hz

DC12V      AC110V 50/60Hz

DC24V      AC220V 50/60Hz

## 2.Characteristics:

- 1) The protection grade for this series solenoid valve is IP65.
- 2) Different voltages are available for coils.
- 3) Pressure unit: 1kgf/cm<sup>2</sup>=1bar=0.1MPa=100KPa=14.5psi
- 4) Lead wire type is available, please remind when you order.
- 5) Different thread types can be offered according to customers' requirements, e.g.: PT, NPT etc.

## 3.Specification:

Model	2V025-06	2V025-08
Applicable medium	≤40μ Filtered Air, Water, Oil	
Motion pattern	Direct drive type	
Working pressure	0.15~0.8 MPa	
Proof Pressure	1.2MPa	
Temperature range	NBR: 5°C~50°C	
Port size	G1/4	
IP grade	IP65	
Insulation grade	F	
Available Voltage	DC5, DC12V,DC24V,AC24V,AC36V,AC110V,AC220V,AC380V	
Power consumption	AC: 6.5W, DC: 6.5W	
Voltage range	±10%	
Material of body	Aluminum alloy or Brass with nickel plated	
Highest action frequency	10 cycles/second	
Shortest excitation time	0.05 s	
Sealing material	NBR or VITON	

\* 1 kgf/cm<sup>2</sup> = 1 bar = 0.1 Mpa = 100KPa = 14.5psi

## 4. Overall and Dimension Sheet:

