

High pressure regulator:

a) QTYH series:



QTYH-15



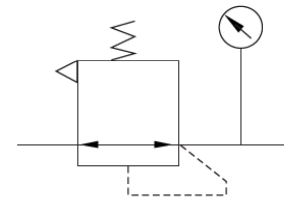
QTYH-25L

1.Ordering Code :

QTYH
↑
Model
High pressure regulator

15
↑
Port size
08: G1/4
10: G3/8
15: G1/2
20: G3/4
25: G1

L
↑
Thread type
Blank: Round turn handle
L: Lever handle for 20~25



2.Instructions:

- 1) QTYH series high pressure regulators can be installed in any position, but mounted as vertically as possible (handle on top or below)
- 2) The flow direction should follow arrow indicated while installing.
- 3) This high pressure regulator can be used alone. It is better install a water filter before the inlet of the valve, because the condensed water, dust or oil might block the regulator or causes more problems. If lubrication needs, the lubricator should be installed after the regulator.

3.Specification:

Model	QTYH-08	QTYH-10	QTYH-15	QTYH-20L	QTYH-25L
Applicable medium	Compressed Air				
Working pressure range	0.05~3.5 MPa				
Proof pressure	4.0 Mpa				
Working Temperature range	-5°C~60°C				
Port size	G1/4	G3/8	G1/2	G3/4	G1

4.Dimension:

