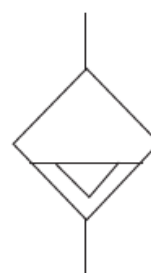


AD-5 Series End Auto Drainer:

1. Ordering Code : AD-5



Graphic Symbol



2.Characteristics:

- 1) This product is often used to the lower places of auto-drain piping, frozen type air drying machine, oil separator, air drying tanks and the bottom of various air filters.
- 2) It can be installed in the places inconvenient for manual dis-charge of sewage. Such as higher, lower and narrow places, especially there's large consumption of air of frequent water drains.
- 3) It can prevent the compressed air being re-polluted by condense water resulting from neglect of manual drain.
- 2) Different thread type can be offered according to customers' requirements, e.g.: PT, NPT etc.

3.Specification:

Model	AD-5
Applicable medium	Compressed Air
Working pressure range	0.29~0.98 MPa
Proof pressure	1.5MPa
Working Temperature range	2°C~60°C
Inlet port size	1/2"PT or Rc1/2 Female thread
Outlet port size	1/2"PT or Rc1/2 Female thread
Drain Status	Normal open type

4. Overall and Dimension Sheet:

