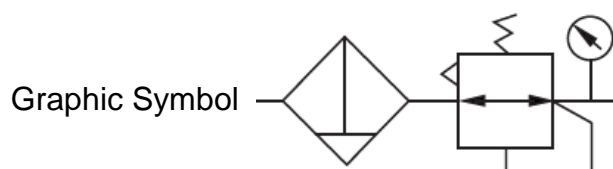


## AW Series Filter & Regulator:



### 1. Ordering Code :

AW	-	2000	-	02	-	□
↑		↑		↑		↑
Model		Body size		Port size		Blank: Manual
Filter&Regulator		1000		M5: M5X0.8		D:With Autodrain
		2000		01: G1/8		
		3000		02: G1/4		
		4000		03: G3/8		
		5000		04: G1/2		
				06: G3/4		
				10: G1		



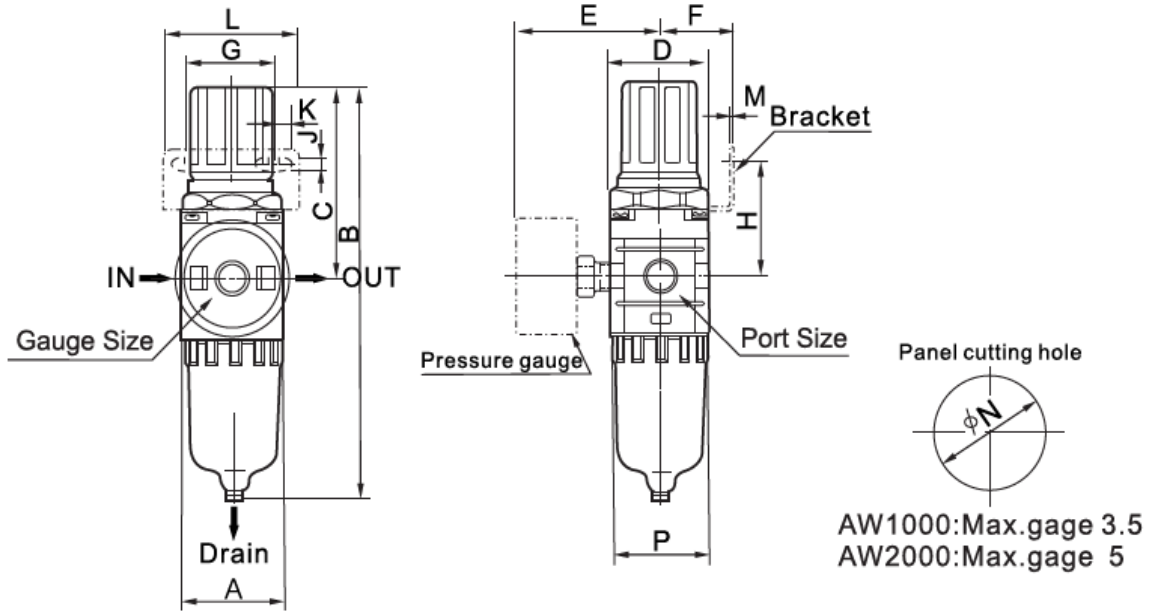
### 2.Characteristics:

- 1) The AW with water separate cleans the compressed air of fluid oil, condensation and dirt particles. For special application, the standard 40µm filter element may easily be replaced by a 5µm filter element. And it maintains inputting constant operating pressure despite fluctuation in line pressure & the amount of air consumed.
- 2) Different thread type can be offered according to customers' requirements, e.g.: PT, NPT etc.

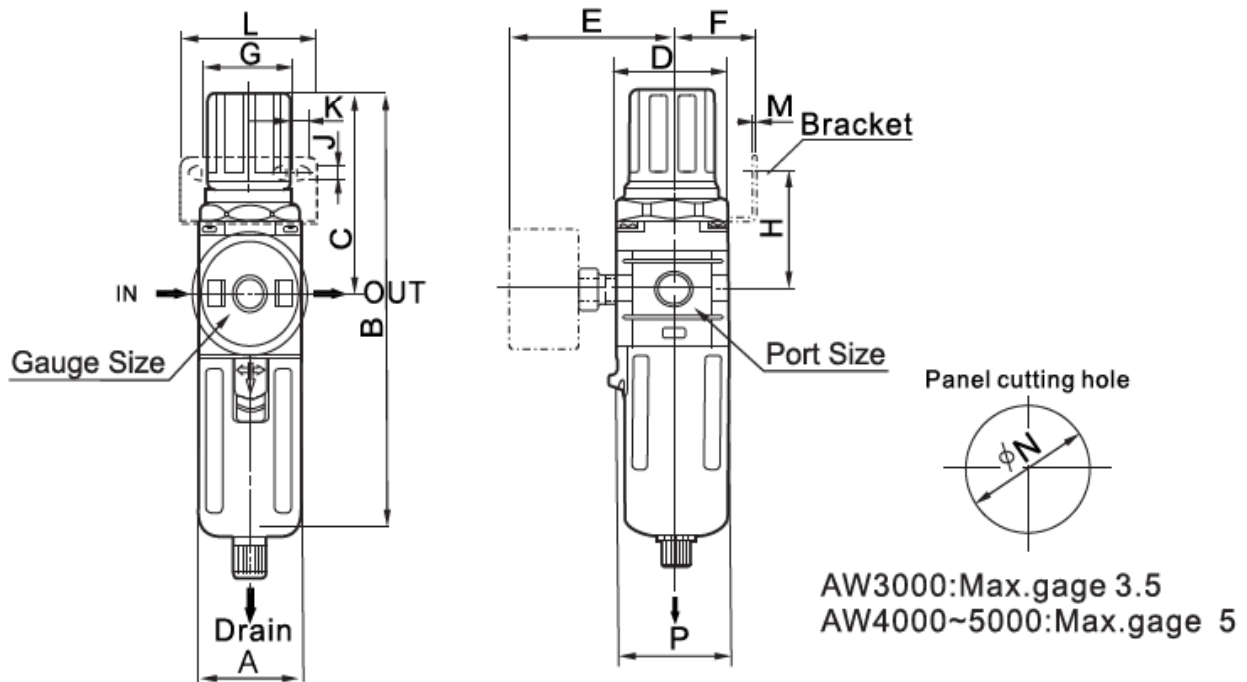
### 3.Specification:

Model	AW2000-01	AW2000-02	AW3000-02	AW3000-03	AW4000-03	AW4000-04	AW4000-06	AW5000-06	AW5000-10
Port size	G1/8	G1/4	G1/4	G3/8	G3/8	G1/2	G3/4	G3/4	G1
Applicable medium	Compressed Air								
Working pressure range	0.05~0.85 MPa								
Proof pressure	1.5MPa								
Temperature range	0°C~60°C								
Nominal flow rate L/min	550	550	2000	2000	4000	4000	4500	5000	5000
Grade of filtration	40µm(in default),25µm,5µm								
Ccontainer Material	Polycarbonate								
Protective cover	Not available		Available						
Drain Function	Differential drain		Differential drain or Automatic drain						

## 4. Overall and Dimension Sheet:



**AW1000~AW2000**



**AW3000~AW5000**

Model	Port Size(G)	A	B	C	D	E	F	G	H	J	K	L	M	N	P
AW1000	M5	25.	109.5	50.5	25	26	25	28	30	4.5	6.5	40	2	20.5	28
AW2000	G1/8~G1/4	40	164.5	78	40	56.8	30	34	43.5	5.4	15.4	55	2.3	33.5	40
AW3000	G1/4~G3/8	53	211	92.5	53	60.8	39	40	46	6.5	8	53	2.3	42.5	56
AW4000	G3/8~1/2	70	262	112	70	70.5	49.2	54	53.5	8.5	10.5	70	2.3	52.2	73
AW4000-06	G3~4	75	267	114	70	70.5	49.2	54	55.5	8.5	10.5	70	2.3	52.5	73
AW5000	G3/4~G1	90	338	116	90	75.5	49.2	54	62	8.5	10.5	70	2.3	52.5	90