

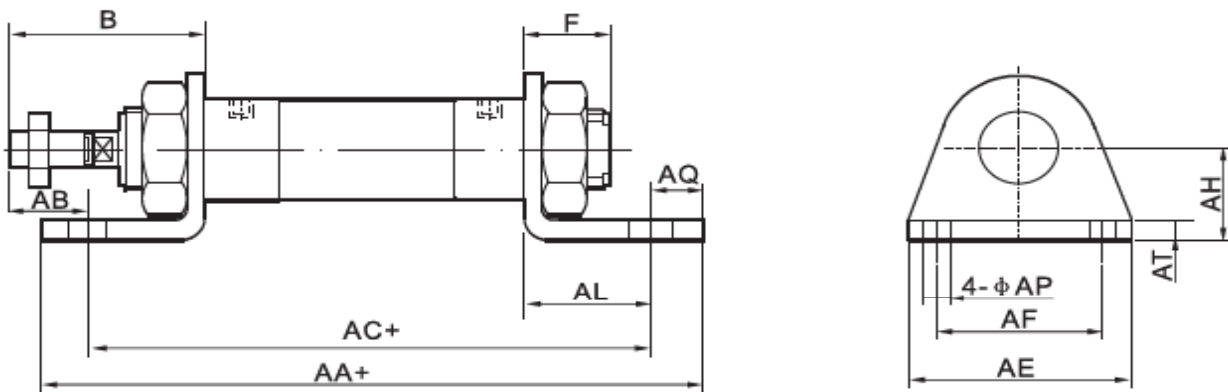
Mounting Brackets for DSN,MA,MAL Mini Cylinder:

a) LB foot bracket for DSN, MA, MAL mini crimp cylinder



Ordering Code:

LB - 25 - M
 ↑ ↑ ↑
 Foot bracket Bore of cylinder For Mini cylinder
 Steel with zinc coated



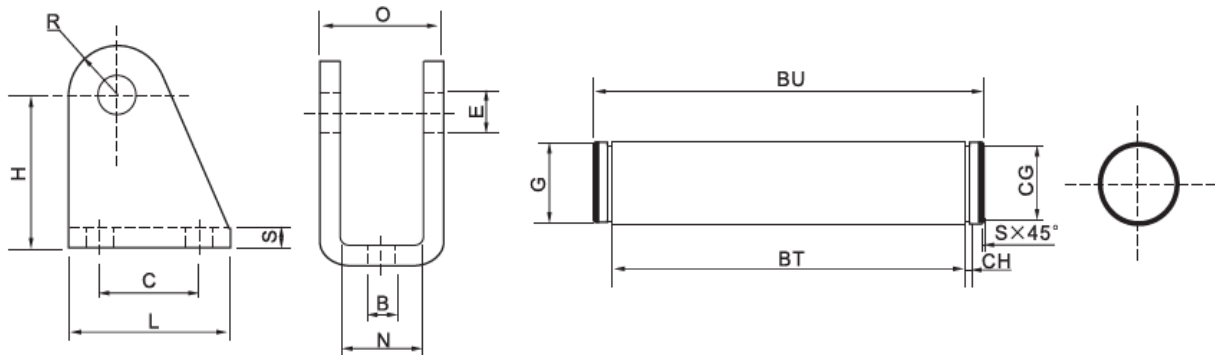
Symbol	Bore	B	F	AA (MA Series)	AA (MAL Series)	AA(MSA Series)		AA(MSAL Series)		AB	AC (MA Series)	AC (MAL Series)	AC(MSA Series)		AC(MSAL Series)		AE	AF	AL	AQ	AP	AT	AH
						0-50	51-100	0-50	51-100				0-50	51-100	0-50	51-100							
	16	38	16	98	-	98	123	-	-	25	86	-	86	111	-	-	44	32	13	6	5.5	3	20
	20	40	12	122	116	122	147	116	141	25	106	100	106	131	100	125	54	40	15	8	6.5	3	25
	25	44	14	122	116	122	147	116	141	29	106	100	106	131	100	125	54	40	15	8	6.5	3	25
	32	44	14	142	136	142	167	136	161	19	126	120	126	151	120	145	59	45	25	8	6.5	4	32
	40	46	14	142	158	142	167	158	183	21	126	142	126	151	142	167	64	60	25	8	6.5	4.5	36

c) U Hinge for DSN, MA, MAL mini cylinder



Ordering Code:

U - 25 - M
 ↑ ↑ ↑
 U hinge bracket Bore of cylinder For Mini cylinder
 Steel with zinc coated



Symbol/Bore	B	E	C	H	L	N	O	R	S	G	BT	CG	CH	BU	S
8/10	4.5	4	12.5	24	20	8.1	13	5	2.5	4	14	3.7	0.5	17	0.2
12/16	5.5	6	15	27	25	13	18	7	3	6	19	5.6	0.8	24	0.4
20/25	6.6	8	20	29.5	32	16.1	24	10	4	8	25.2	7.5	0.9	29.5	0.5

