

FK Type Float Joint :



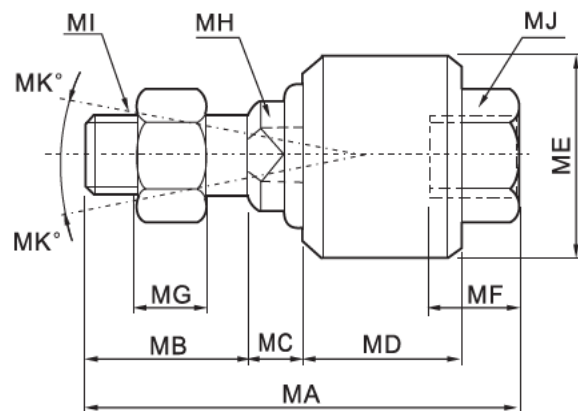
1. Ordering Code :

FK	-	50	-	M16x1.5
↑		↑		↑
Model		Bore of cylinder		Female thread
Float Joint		20		M8x1.25
		25/32		M10x1.25
		40		M12x1.25
		50/63		M16x1.5
		80/100		M20x1.5
		125		M27x2.0
		160/200		M36x2.0

2. Characteristics:

- 1) This series of FK float joint matches with DNC,SI, SC,SU,DSN etc series cylinders
- 2) Surface treatment: Zinc plated.
- 3) Material of the body: Carbon steel.

3. Overall and dimension:



Symbol /Bore	MA	MB	MC	MD	ME	MF	MG	MH	MI	MK
32	58	22	7	21	26	11.5	7	10	M10×1.25	12
40	58	22	8	21	28	11.5	8	12	M12×1.25	12
50	90	27	10	41	44.5	20	10	17	M16×1.5	7
63	90	27	10	41	44.5	20	10	17	M16×1.5	7
80	102	29	13	46	53	24	13	22	M20×1.5	10
100	102	29	13	46	53	24	13	22	M20×1.5	10
125	147	54	13	64	62	39	14	30	M27×2.0	9
160	147	43	23	58	88	35	13.5	36	M36×2.0	15
200	147	43	23	58	88	35	13.5	36	M36×2.0	15