

I type Joint :



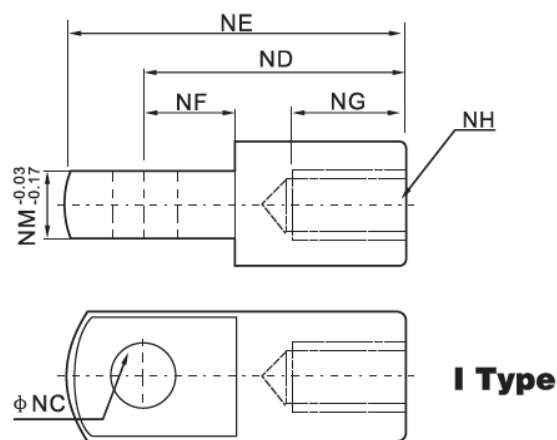
1. Ordering Code :

I	-	50	-	M16x1.5
↑		↑		↑
Model		Bore of cylinder		Female thread
I type joint		20		M8x1.25
		25/32		M10x1.25
		40		M12x1.25
		50/63		M16x1.5
		80/100		M20x1.5
		125		M27x2.0
		160/200		M36x2.0

2. Characteristics:

- 1) This series of I type joint matches with DNC,SI, SC,SU,DSN etc series cylinders
- 2) Surface treatment: Nickel plated or zinc coated.
- 3) Material of the body: Carbon steel.

3. Overall and dimension:



Symbol/Bore	32	40	50	63	80	100	125	160	200
NA	19	25.4	32	32	44.4	44.4	55	70	70
NC	10	12	16	16	20	20	30	35	35
ND	40	48	64	64	80	80	110	144	144
NE	52	67	89	89	112	112	155	201	201
NF	15	24	32	32	40	40	50	50	55
NG	20	20	23	23	30	30	56	72	72
NH	M10×1.25	M12×1.25	M16×1.5	M16×1.5	M20×1.5	M20×1.5	M27×2.0	M36×2.0	M36×2.0
NM	10	12	16	16	20	20	30	35	35
NP	20	24	32	32	40	40	54	72	72
NQ	52	62	83	83	105	105	148	191	191
PA	26.2	32.8	39.3	39.3	53.3	53.3	64	80	80
PB	20	26.5	33	33	45	45	55.6	70.6	70.6