

## B Type Bearing Joint (Fish eye joint):



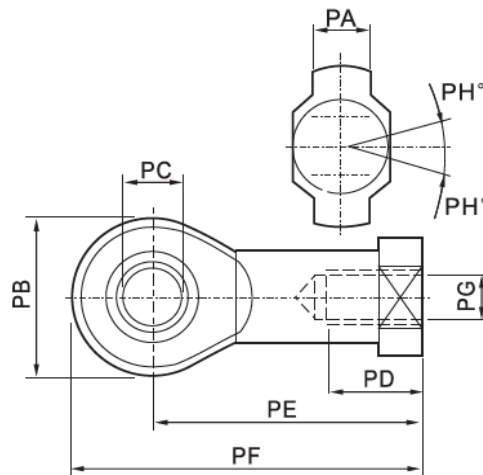
### 1. Ordering Code :

|               |   |                  |   |               |
|---------------|---|------------------|---|---------------|
| B             | - | 50               | - | M16x1.5       |
| ↑             |   | ↑                |   | ↑             |
| Model         |   | Bore of cylinder |   | Female thread |
| Bearing Joint |   | 20               |   | M8x1.25       |
|               |   | 25/32            |   | M10x1.25      |
|               |   | 40               |   | M12x1.25      |
|               |   | 50/63            |   | M16x1.5       |
|               |   | 80/100           |   | M20x1.5       |
|               |   | 125              |   | M27x2.0       |
|               |   | 160/200          |   | M36x2.0       |

### 2. Characteristics:

- 1) This series of B bearing joint matches with DNC,SI, SC,SU,DSN etc series cylinders
- 2) Surface treatment: Zinc plated.
- 3) Material of the body: Carbon steel.

### 3. Overall and dimension:



| Symbol/Bore | PA | PB | PC | PD | PE  | PF  | PG       | PH |
|-------------|----|----|----|----|-----|-----|----------|----|
| 32          | 11 | 26 | 10 | 21 | 43  | 56  | M10×1.25 | 13 |
| 40          | 12 | 30 | 12 | 24 | 50  | 65  | M12×1.25 | 13 |
| 50          | 15 | 38 | 16 | 33 | 64  | 83  | M16×1.5  | 15 |
| 63          | 15 | 38 | 16 | 33 | 64  | 83  | M16×1.5  | 15 |
| 80          | 18 | 46 | 20 | 40 | 77  | 100 | M20×1.5  | 15 |
| 100         | 18 | 46 | 20 | 40 | 77  | 100 | M20×1.5  | 15 |
| 125         | 37 | 70 | 30 | 51 | 110 | 145 | M27×2.0  | 15 |
| 160         | 43 | 80 | 35 | 56 | 125 | 165 | M36×2.0  | 16 |
| 200         | 43 | 80 | 35 | 56 | 125 | 165 | M36×2.0  | 16 |