

FA/FB Type Flange (ISO6431):



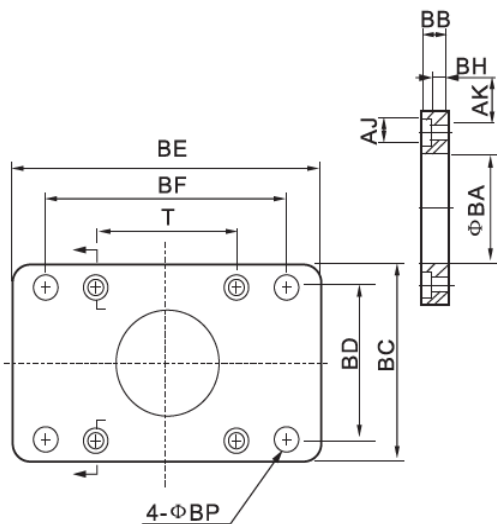
1. Ordering Code :

FA/FB - 50 - ISO
 ↑ ↑ ↑
 Model Bore of cylinder ISO6431 standard
 FA/FB type flange

2. Characteristics:

- 1) This series of mount flange matches with ISO6431 cylinders, like DNC, SI series.
- 2) Surface treatment: Paint coating.
- 3) Material of the body: Aluminum alloy.
- 4) With 4pcs of steel boltst for convenience of installation.

3. Overall and dimension:



Symbol/Bore	32	40	50	63	80	100	125	160	200
AJ	11	11	14	14	17	17	19	25	25
AK	7	7	9	9	11	11	13	17	17
BA	30.5	35.5	40.5	45.5	45.5	55.5	60.5	65.5	75.5
BB	10	10	12	12	16	16	20	20	25
BC	47	53	65	75	95	115	140	180	220
BD	32	36	45	50	63	75	90	115	135
BE	80	90	110	125	154	186	224	280	320
BF	64	72	90	100	126	150	180	230	270
BH	4	4	4	6	6	6	8	8	12
BP	7	9	9	9	12.5	14.5	16.5	18.5	24
T	32.5	38	46.5	56.5	72	89	110	140	175