

SDB Rear Mount Bracket (ISO6431):



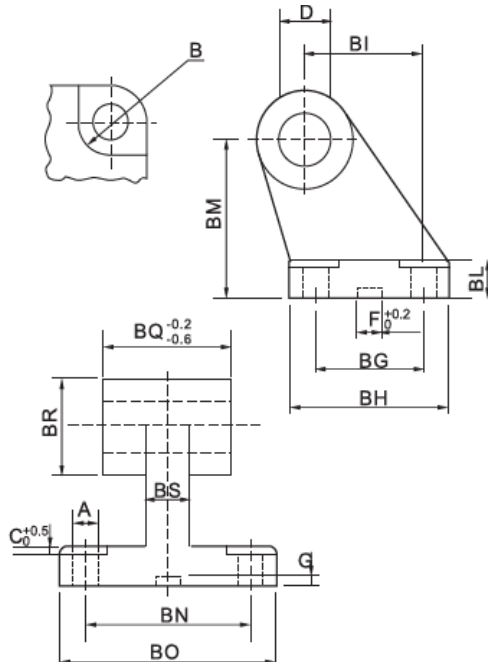
1. Ordering Code :

SDB - **50** - **ISO**
 ↑ ↑ ↑
 Model Bore of cylinder ISO6431 standard
 SDB rear bracket

2. Characteristics:

- 1) This series of male rear mount bracket matches with ISO6431 cylinders, like DNC, SI series.
- 2) Surface treatment: Paint coating.
- 3) Material of the body: Aluminum alloy.
- 4) With 4pcs of steel boltst for convenience of installation.
- 5) Press-in bearing bush makes it long life.

3. Overall and dimension:



Symbol/Bore	32	40	50	63	80	100	125
A	6.6	6.6	9	9	11	11	14
B	11	11	15	15	18	18	20
BG	18	22	30	35	40	50	60
BH	31	35	45	50	60	70	90
BI	21	24	33	37	47	55	70
BL	8	10	12	14	14	17	20
BM	32	36	45	50	63	71	90
BN	38	41	50	52	66	76	94
BO	51	54	65	67	86	96	124
BS	10	15	16	16	20	20	30
BR	20	22	26	30	30	38	45
C	1.6	1.6	1.6	1.6	2.5	2.5	3.2
D	10	12	12	16	16	20	25
F	10.5	10.5	10.5	10.5	10.5	10.5	10.5
G	3	3	3	3	3	3	3
BQ	26	28	32	40	50	60	70